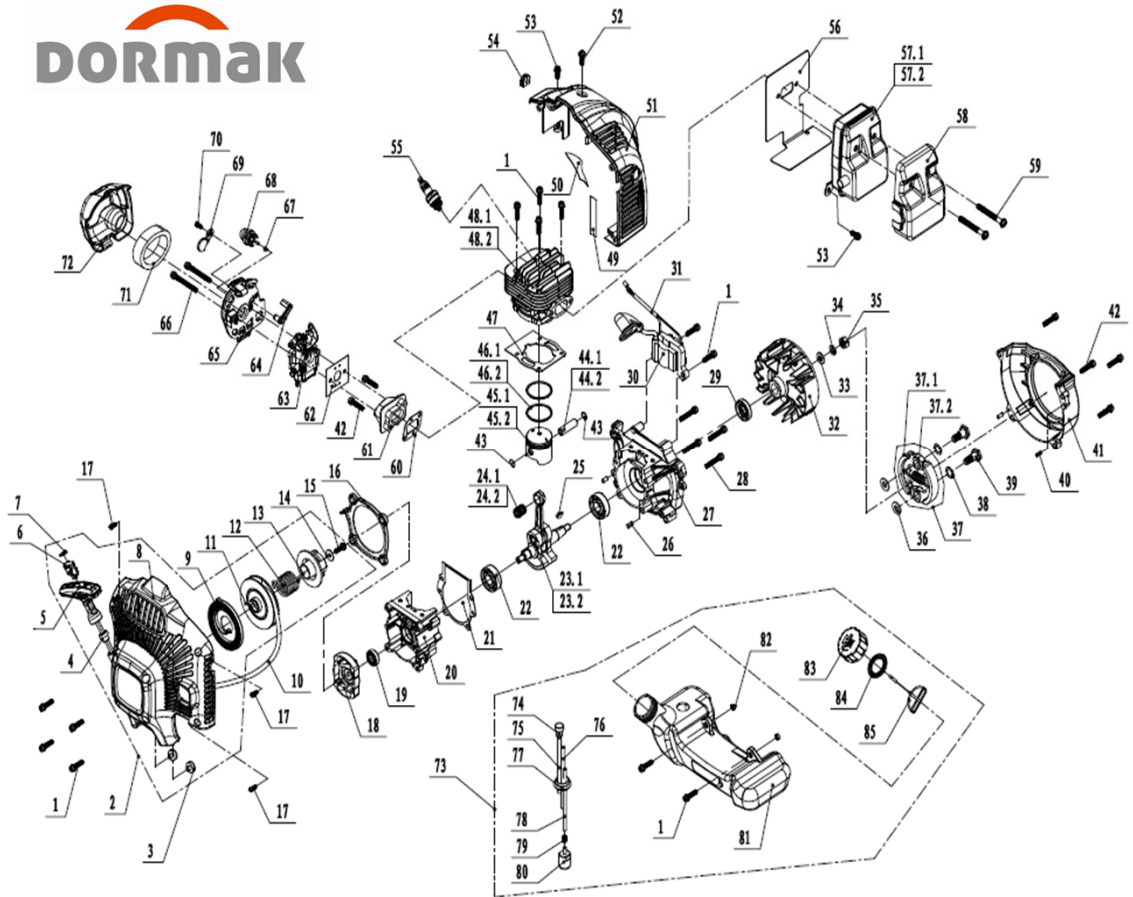


# LISTA PEÇAS DO MOTOR DK52



Nº	Referência	Descrição da Peça	Qtde	Nº	Referência	Descrição da Peça	Qtde
1	5.01.07.05221	SCREW M5×22	12	44,2	4.004.0031.12	PISTON PIN Φ6×Φ10×35.9	1
2	3.002.0003.32	G4302 EASY START ASS'Y	1	45,2	4.004.0013.15	G5302 PISTON	1
3	4.013.0021.36	OIL TANK DAMPING RUBBER	2	46,2	4.004.0021.15	PISTON RING Φ44×2	2
4	4.504.0011.01	4600 ROPE GUIDE Φ10×Φ5	1	47	4.019.0021.09	GASKET	1
5	3.001.0241.07	START HANDLE	1	48,2	4.002.0011.20	G5302 CYLINDER	1
6	4.018.0021.39	5601 ROPE BUFFER RUBBER	1	49	4.018.0041.12	ALUMINUM FOIL INSULATION 2	1
7	4.019.0091.01	5601 ROPE GASKET	1	50	4.018.0041.11	ALUMINUM FOIL INSULATION 1	1
8	3.001.0093.15	BACK CYLINDER COVER	1	51	3.001.0091.17	FRONT CYLINDER COVER	1
9	4.012.0012.02	G4302 RECOIL SPRING COMP.	1	52	5.01.06.05121	SCREW M5×12	1
10	4.012.0031.02	4600 ROPE Φ3×900	1	53	5.01.07.05131	SCREW M5×13	2
11	4.012.0151.09	G4302 EASY START ROPE WHEEL	1	54	4.009.0101.05	GUIDE	1
12	4.012.0021.05	G4302 ENERGY STORAGE SPRING	1	55	4.009.0041.01	SPARK PLUG (L8RTF)	1
13	4.012.0101.05	G4302 EASY START RATCHET WHEEL	1	56	4.019.0031.12	GASKET	1
14	5.05.01.05161	WASHER Φ5×Φ16×1	1	57,1	4.006.0012.13	MUFFLER (EU V)	1
15	5.01.04.05161	SCREW M5×16	1	58	4.006.0051.03	MUFFLER COVER (EU V DEDICATED)	1
16	3.001.0123.06	START COVER	1	59	5.01.04.06551	SCREW M6×55	2
17	5.01.02.42092	SCREW ST4.2×9.5	3	60	4.019.0041.05	GASKET	1
18	4.012.0162.02	G3302 START REEL ASS'Y	1	61	4.005.0023.10	INLET PIPE	1
19	5.09.01.12221	SEAL Φ12×Φ22×7	1	62	4.019.0061.06	GASKET	1
20	4.001.0041.12	CRANKCASE	1	63	4.017.0012.14	CARBURETOR	1
21	4.019.0011.07	GASKET	1	64	3.001.0343.14	CHOKE HANDLE	1
22	5.08.01.15351	BEARING 6202	2	65	4.005.0203.04	CLEANER INSIDE COVER	1
23,2	4.003.0012.15	G5302 CRANKSHAFT ASS'Y	1	66	5.01.07.05501	SCREW M5×50	2
24,2	5.08.08.10151	BEARING K10×14×15.5	1	67	4.007.0041.33	OIL OUTLET PIPE	1
25	5.06.01.03131	KEY 3.0×5.0×13	1	68	4.007.0161.01	FUEL PRIMER COMP.	1
26	5.04.08.05101	PIN Φ×10	2	69	3.001.0343.13	CHOKE	1
27	4.001.0021.10	CRANKCASE	1	70	5.01.03.35081	SCREW ST3.5×8	1
28	5.01.07.05321	SCREW M5×32	4	71	4.005.0053.04	FILTER NET	1
29	5.09.05.0004	SEAL Φ15×Φ30×7	1	72	3.001.0101.31	CLEANER OUTSIDE COVER	1
30	4.009.0023.11	IGNITION COIL COMP.	1	73	4.007.0201.01	FUEL TANK ASS'Y	1
31	4.009.0031.12	CORD COMP.	1	74	4.007.0022.01	BREATHER ASS'Y	1
32	4.009.0012.03	FLYWHEEL	1	75	4.007.0041.34	G4302 VENT PIPE	1
33	5.05.01.08161	WASHER Φ8.4×Φ16×1.6	1	76	4.007.0041.32	FUEL RETURN PIPE	1
34	5.05.02.08001	WASHER Φ8	1	77	4.013.0021.32	RUBBER PLUG	1
35	5.02.01.08001	NUT M8	1	78	4.007.0041.31	FUEL INLET PIPE	1
36	4.010.0111.04	WASHER Φ8×Φ18	2	79	4.007.0081.02	CLAMP	1
37	3.002.0010.06	G4302 CLUTCH ASS'Y	1	80	4.007.0012.03	FUEL FILTER	1
37,1	4.010.0111.01	G4302 CLUTCH SHOE	2	81	4.007.0201.02	FUEL TANK	1
37,2	4.010.0111.05	SPRING	1	82	4.502.0011.62	G4302 FUEL TANK INSERTS	2
38	4.010.0111.03	WASHER Φ11×Φ15	2	83	4.007.0201.03	FUEL TANK LID	1
39	4.010.0111.02	SCREW PIN M8	2	84	4.007.0101.02	GASKET	1
40	5.04.08.04101	PIN Φ4×10	2	85	3.001.0293.02	LINK	1
41	4.001.0013.04	FAN COVER	1				
42	5.01.07.05251	SCREW M5×25	6				
43	4.004.0041.11	CIRCLIP Φ10	2				