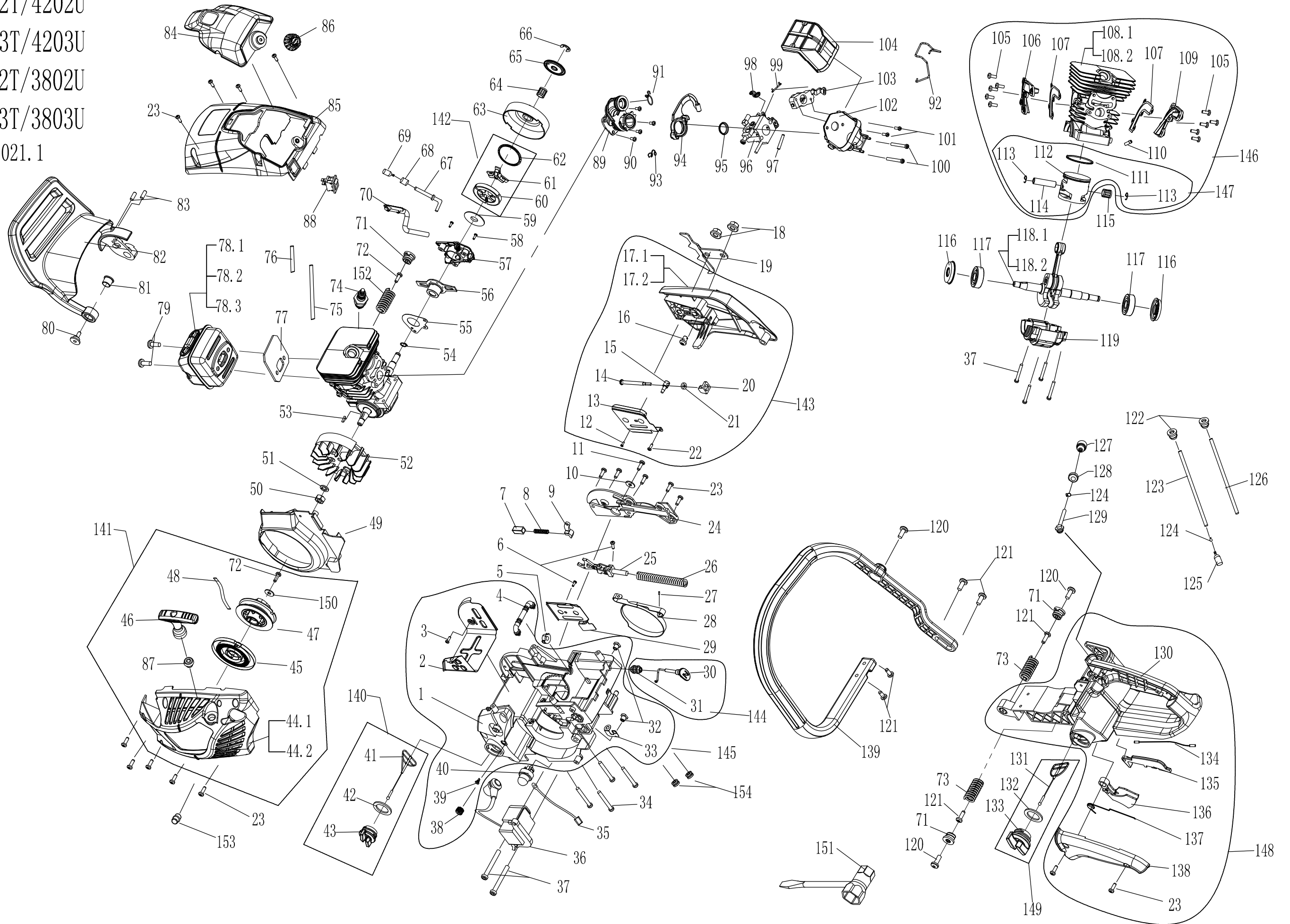


4202/4202T/4202U
4203/4203T/4203U
3802/3802T/3802U
3803/3803T/3803U
VERSION: 2021.1



KEY	CODE	DESCRIPTION	QTY	KEY	CODE	DESCRIPTION	QTY	KEY	CODE	DESCRIPTION	QTY	KEY	CODE	DESCRIPTION	QTY
1	3.001.0013.06		1	51	5.05.02.08002		1	101	5.01.04.04121		2	147	3.002.0027.10	Kit Pistom CPL DK4116	1
2	4.018.0051.05		1	52	4.009.0013.09	Volante magnético	1	102	3.001.0353.06	Suporte filtro ar DK4116	1	148	3.002.0008.08	Asa traslina CPL	1
3	5.01.02.35101		1	53	5.06.01.03101	Escatel volante magnético	1	103	4.005.0263.01	Valvula corpo carburador	1	149	3.002.0024.01	Tampa depósito combustivel	1
4	4.018.0021.35		1	54	5.07.01.11001		1	104	4.005.0012.14	Filtro ar DK4116	1	150	5.05.01.51615		1
5	4.007.0181.01	Passa tubos	1	55	4.014.0171.01	Chapa sem fim bomba óleo	1	105	5.01.06.04101		10	151	4.000.0013.06		1
6	5.01.03.35081		2	56	4.014.0063.07	Sem fim bomba óleo	1	106	4.002.0051.01		1	152	4.013.0011.12	Amortecedor sup. Asa transparente	1
7	4.011.0161.03	Casquilha mola pala travão	1	57	4.014.0012.03	Bomba óleo DK4116	1	107	4.019.0081.01		2	153	4.000.0151.05		1
8	4.011.0161.02	Mala fixação pala	1	58	5.01.04.04151		2	108.1	4.002.0011.15		1	154	4.007.0071.09		2
9	4.011.0051.02	Linguete pala travão	1	59	4.010.0051.02		1	108.2	4.002.0011.21		1				
10	5.05.01.05161		1	60	4.010.0011.02		3	109	4.002.0061.01		1				
11	5.01.05.48121		1	61	4.010.0021.02		1	110	4.007.0061.02		1				
12	5.01.01.03061		1	62	4.010.0031.02		1	111	4.004.0021.12		1				
13	4.011.0151.01		1	63	4.010.0043.07	Tambor embraiação DK4116	1	112	4.004.0013.12		1				
14	4.015.0031.01		1	64	5.08.08.08131		1	113	4.004.0041.05		2				
15	4.015.0041.01		1	65	4.010.0051.07	Anilha tambor embraiação	1	114	4.004.0031.08		1				
16	4.015.0011.03		1	66	5.07.03.06001	Freio 6mm	1	115	5.08.08.09121	Rolamento cavilha pistom	1				
17.1	3.001.0113.24		1	67	4.014.0041.08	Tube respirador bomba óleo	1	116	5.09.02.12321	Vedante cambota 12x32x35	2				
17.2	3.001.0113.25		1	68	4.014.0111.01	Casquilho tubo óleo	1	117	5.08.01.12321	Rolamento 6201	2				
18	5.02.09.08001	Porca M8	2	69	4.014.0022.02	Respiro bomba óleo	1	118.1	4.003.0012.09		1				
19	4.000.0111.01		1	70	4.014.0051.07	Bomba óleo	1	118.2	4.003.0012.16		1				
20	4.015.0111.01		1	71	3.001.0641.06	Tampa Amortecedor	3	119	4.002.0031.05	Carter Mota	1				
21	4.015.0021.03		1	72	5.01.04.05141		2	120	5.01.04.06162		3				
22	5.01.02.42092		1	73	4.013.0011.11	Amortecedor inf. asa trans.	2	121	5.01.05.48163		6				
23	5.01.03.42141		16	74	4.009.0041.01		1	122	4.007.0071.03	Passa tubos combustivel	2				
24	3.001.0151.05	Tampa plástico cinta travão	1	75	4.007.0041.26	Tube vácuo	1	123.1	4.007.0041.49	Tube combustivel	1				
25	4.011.0042.03		1	76	4.007.0081.03	Casquilho tube vácuo	1	123.2	4.007.0041.53		1				
26	4.011.0011.07		1	77	4.019.0031.09	Junta escape	1	124	4.007.0051.03		2				
27	5.04.01.03091	Pino cinta travão	1	78.1	4.006.0012.26	Escape	1	125	4.007.0012.01	Filtro combustivel	1				
28	4.011.0031.06	Cinta travão	1	78.2	4.006.0012.12		1	126.1	4.007.0041.28	Retorno combustivel	1				
29	4.014.0081.05	Chapa lâmina	1	79	5.01.06.06161		2	126.2	4.007.0041.44		1				
30	3.001.0343.11		1	80	5.01.16.04121		1	127	4.007.0022.01		1				
31	4.008.0041.03		1	81	4.011.0141.03	Casquilho pala travão	1	128	4.007.0111.01		1				
32	5.02.09.05091		2	82	3.001.0361.10		1	129	4.007.0041.12		1				
33	4.009.0061.08		1	83	5.04.01.05131	Pino pala travão	2	130	3.001.0043.17		1				
34	5.01.07.05323		4	84	3.001.0101.29		1	131	3.001.0293.02		1				
35	4.009.0031.10		1	85	3.001.0093.11		1	132	4.007.0101.02		1				
36	4.009.0023.12	Bobine ignição DK4116	1	86	3.001.0333.05	Porca tampa filtro ar	1	133	3.001.0271.01		1				
37	5.01.07.05251		6	87	4.504.0011.01		1	134	4.008.0032.03		1				
38	4.014.0121.01		1	88	4.009.0051.04		1	135	3.001.0211.06		1				
39	4.014.0101.05		1	89	4.005.0023.09	Coletor admissão	1	136	3.001.0201.06		1				
40	4.007.0161.01	Puxador combustivel	1	90	5.01.08.05101		4	137	4.008.0021.07	Mola gatilho acl.	1				
41	3.001.0293.01		1	91	4.005.0091.03		1	138	3.001.0081.12		1				
42	4.014.0091.01		1	92	4.005.0091.04	Mola fixação filtro ar	1	139	3.001.0191.02	Asa transporte Frontal	1				
43	3.001.0251.01		1	93	4.009.0111.03		1	140	3.002.0025.01	Tampa depósito óleo	1				
44.1	3.001.0123.04		1	94	4.005.0191.05	Colar falange carburador	1	141.1	3.002.0003.36		1				
44.2	3.001.0123.05		1	95	4.005.0041.01		1	141.2	3.002.0003.37		1				
45	4.012.0012.01	Mola arrancador	1	96	4.017.0012.05	Carburador chinês	1	142	3.002.0010.02	Embraiação DR4016	1				
46	3.001.0241.08		1	97.1	4.007.0041.27		1	143.1	3.002.0002.18		1				
47	4.012.0151.06	Poli arrancador DK4116	1	97.2	4.007.0041.43		1	143.2	3.002.0002.19		1				
48	4.012.0031.02		1	98	4.005.0291.01		1	144	3.002.0022.05	Puxador Ar DK4116	1				
49	3.001.0141.11		1	99	4.005.0281.01		1	145	3.002.0009.07	Chassi DR4016	1				
50	5.02.01.08001		1	100	5.01.07.05501		2	146	3.002.0006.07	Kit Cilindro CPL + Pistom DK4116	1				